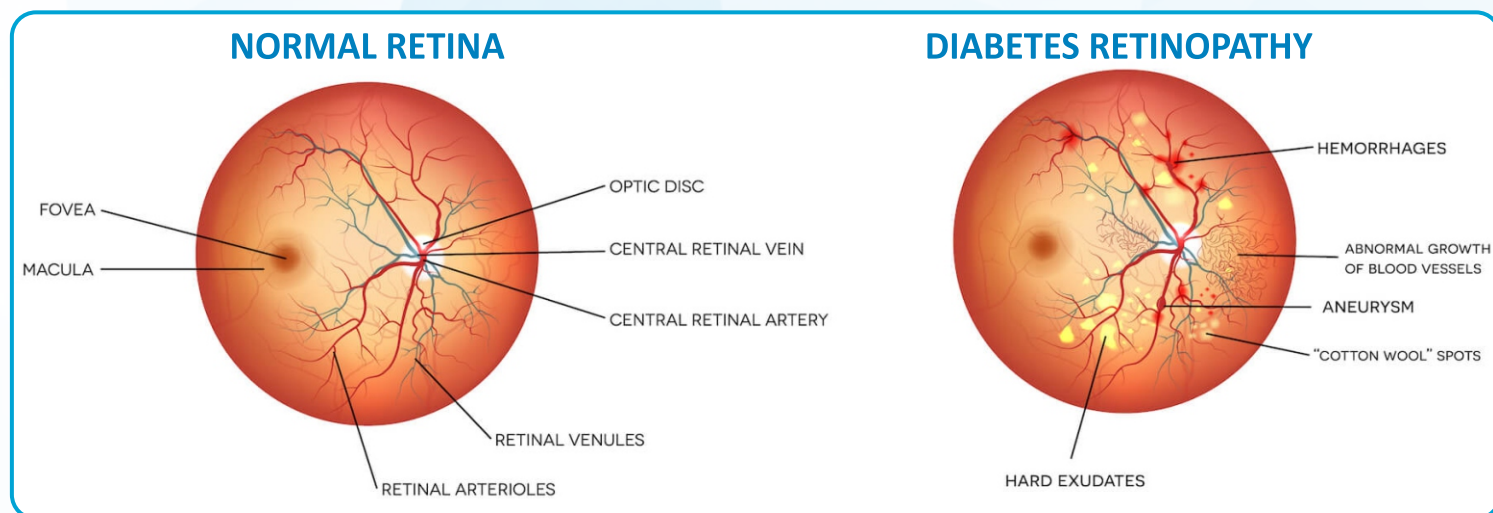


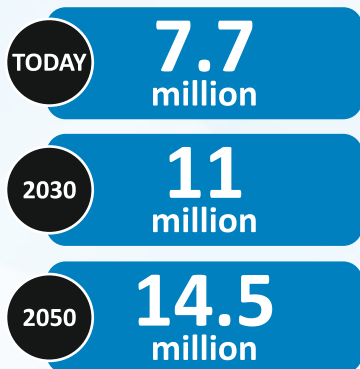
Learn the facts about Diabetic Retinopathy

Diabetic retinopathy occurs when diabetes damages the tiny blood vessels inside the retina, the light-sensitive tissue at the back of the eye.



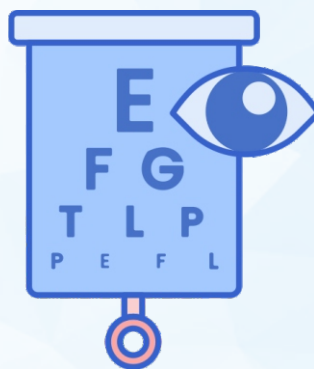
A Growing ISSUE

Diabetic retinopathy is the leading cause of blindness in working age adults ages 20-74.



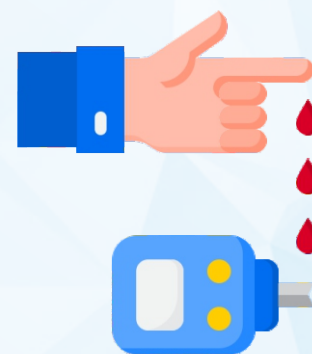
No Early SYMPTOMS

However, over time, diabetic retinopathy can get worse and cause vision loss or blindness



Who is at RISK?

All people with diabetes -- both type 1 and type 2 are at risk



95%

Reduced Risk of Vision Loss

Early detection, timely treatment, and appropriate follow-up care can reduce the risk of severe vision loss by 95 percent